



# Saratoga Gap

## Open Space Preserves

[www.openspace.org](http://www.openspace.org)

### Midpeninsula Regional Open Space District

#### How To Get There

Parking is available at the Caltrans vista point on the southeast corner of the Skyline Boulevard (Highway 35) and Highway 9 intersection. Cross Highway 9 to reach the trailhead for Saratoga Gap Open Space Preserve, located at the northeastern corner of this junction.

#### Map Legend

Gate (#s)	Vehicle Parking Lot	Roadside Parking	Bench	Fire Station	Other Public Lands
Trail Distance in Miles	Bay Area Ridge Trail	Vehicle Driveway	Creek	No Public Entry Private or Leased Lands	

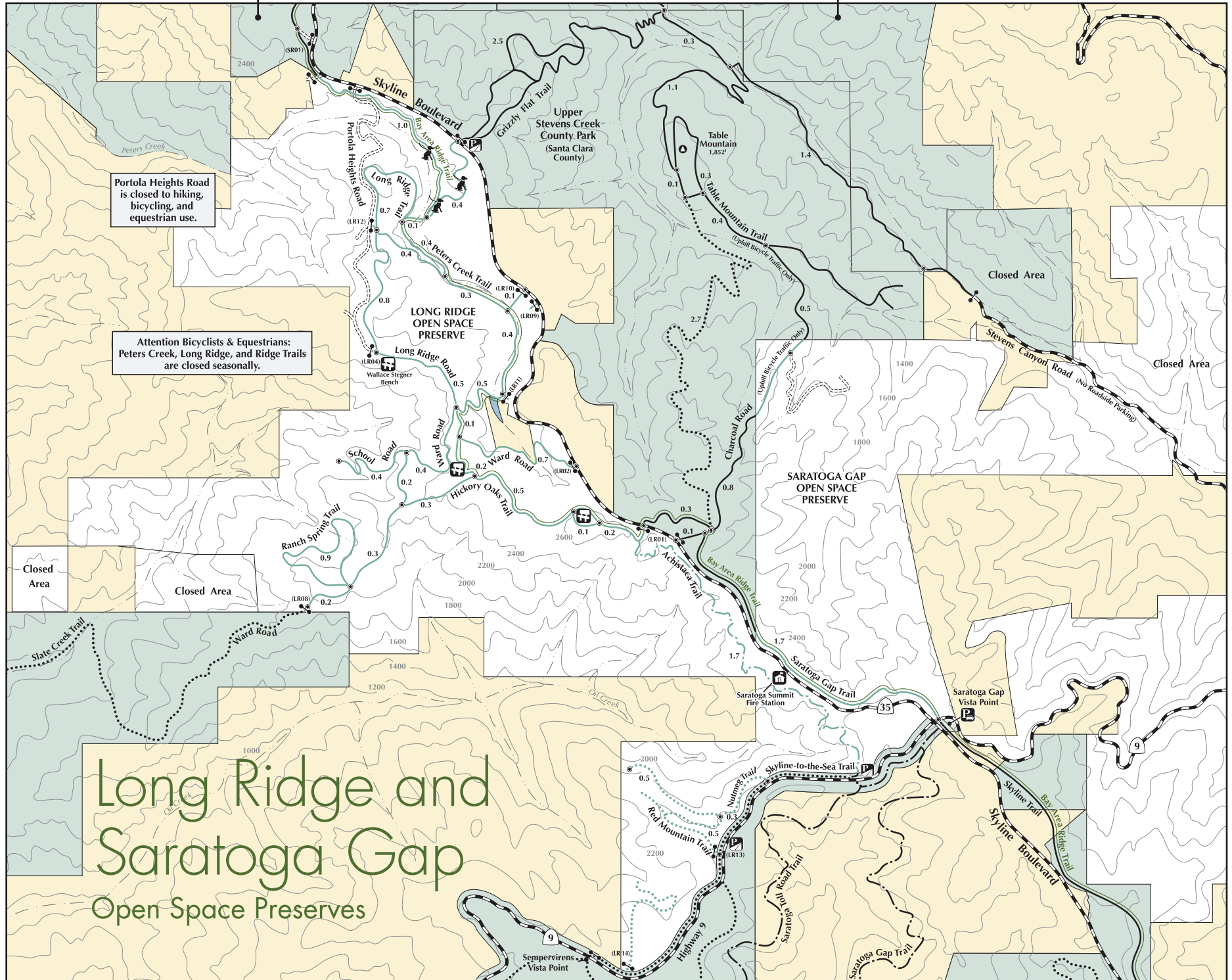
#### Trail Use

Hiking Only	Hiking, Equestrian	Hiking, Bicycling, Equestrian	Dogs are not allowed on the Preserve.



Check trail conditions and seasonal closures by calling the District office at 650-691-1200 or visiting the Web site [www.openspace.org](http://www.openspace.org)

GPS Coordinates displayed on this map are in WGS 1984 and represent the approximate locations of points of interest.



Portola Heights Road is closed to hiking, bicycling, and equestrian use.

Attention Bicyclists & Equestrians: Peters Creek, Long Ridge, and Ridge Trails are closed seasonally.

# Long Ridge and Saratoga Gap Open Space Preserves